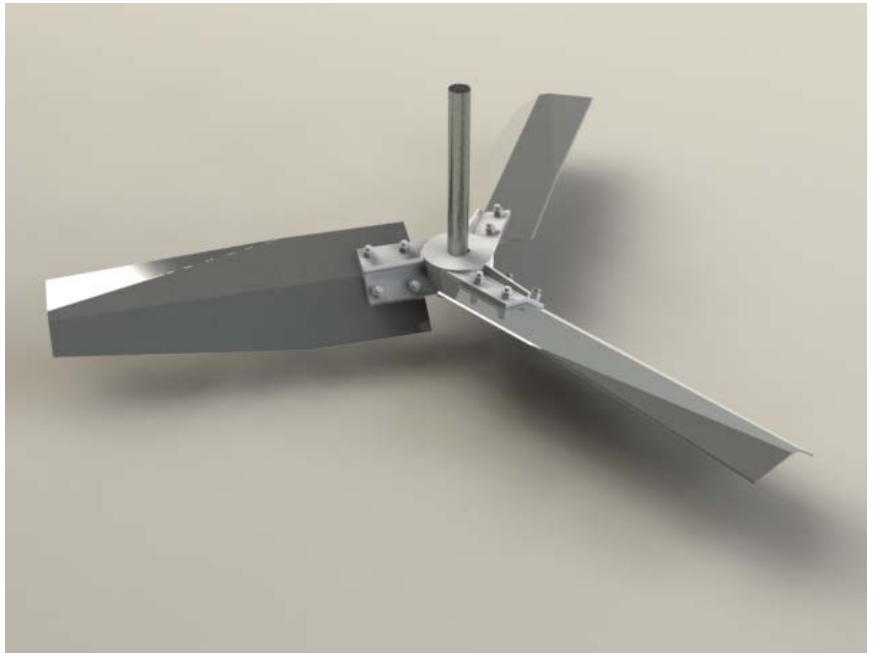


# **XE-3 High Efficiency Impeller**



## **Process Efficiency**

- High flow for improved Blending and Solids Suspension applications
- Possible reduction in the horsepower and size of gear drive to achieve the desired mixing result

## **Mechanical Design**

- Decreases weight by nearly 40% over other High Efficiency Impellers
- Longer in-tank shafts without steady bearings

## **Upgrade Opportunity**

- Impeller weight is similar or less than older, less efficient impellers
- Superior efficiency can almost double a pitched impeller pumping rate at an equivalent power draw